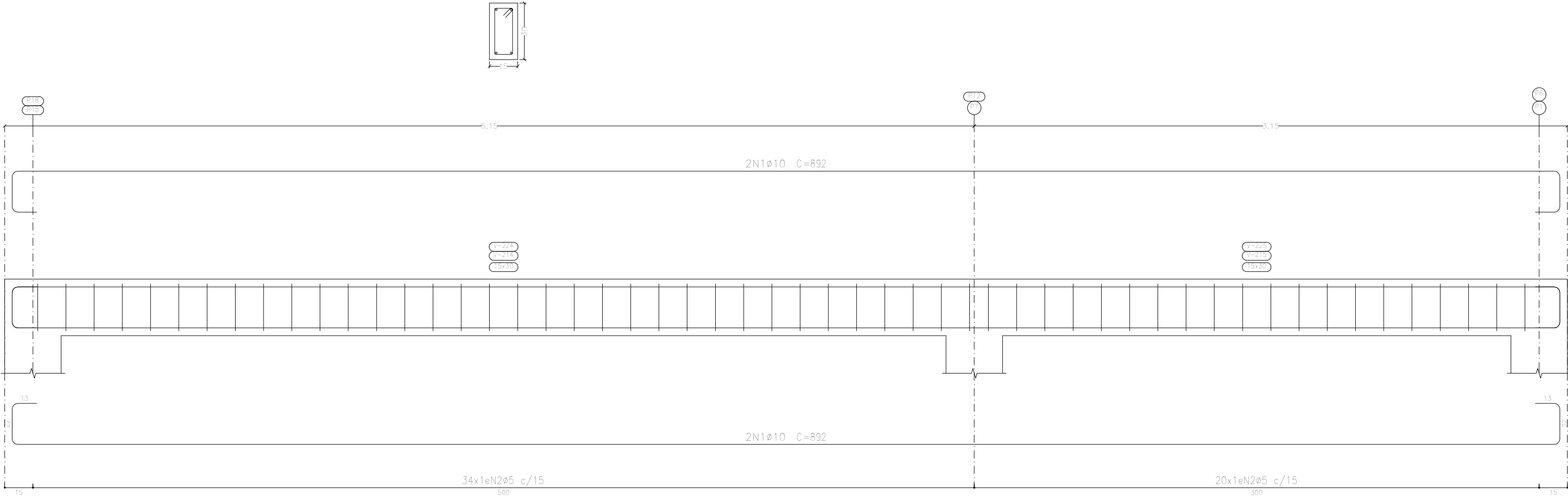
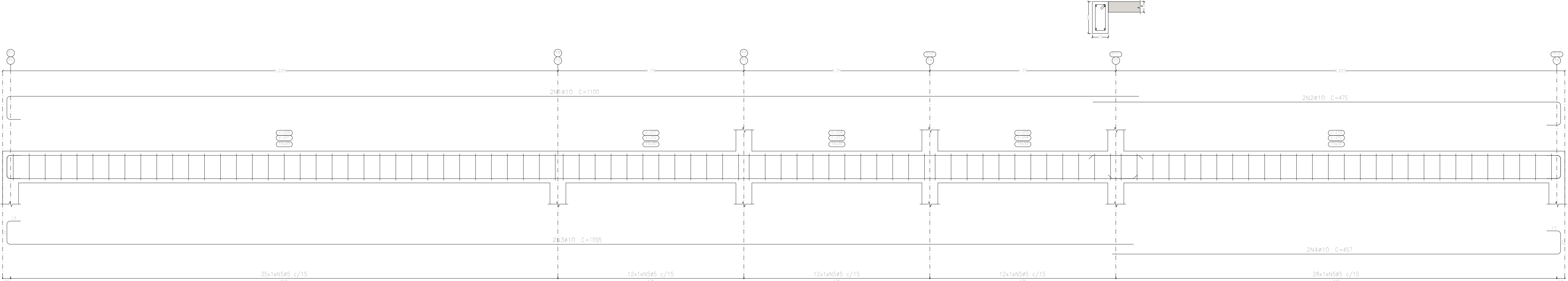


Piso 2
Desenho de vigas
Concreto: C25, em geral
Aço das barras: CA-50 e CA-60
Aço dos estribos: CA-50 e CA-60
Escala vigas 1:20
Escala seções 1:20
Escala aberturas 1:20

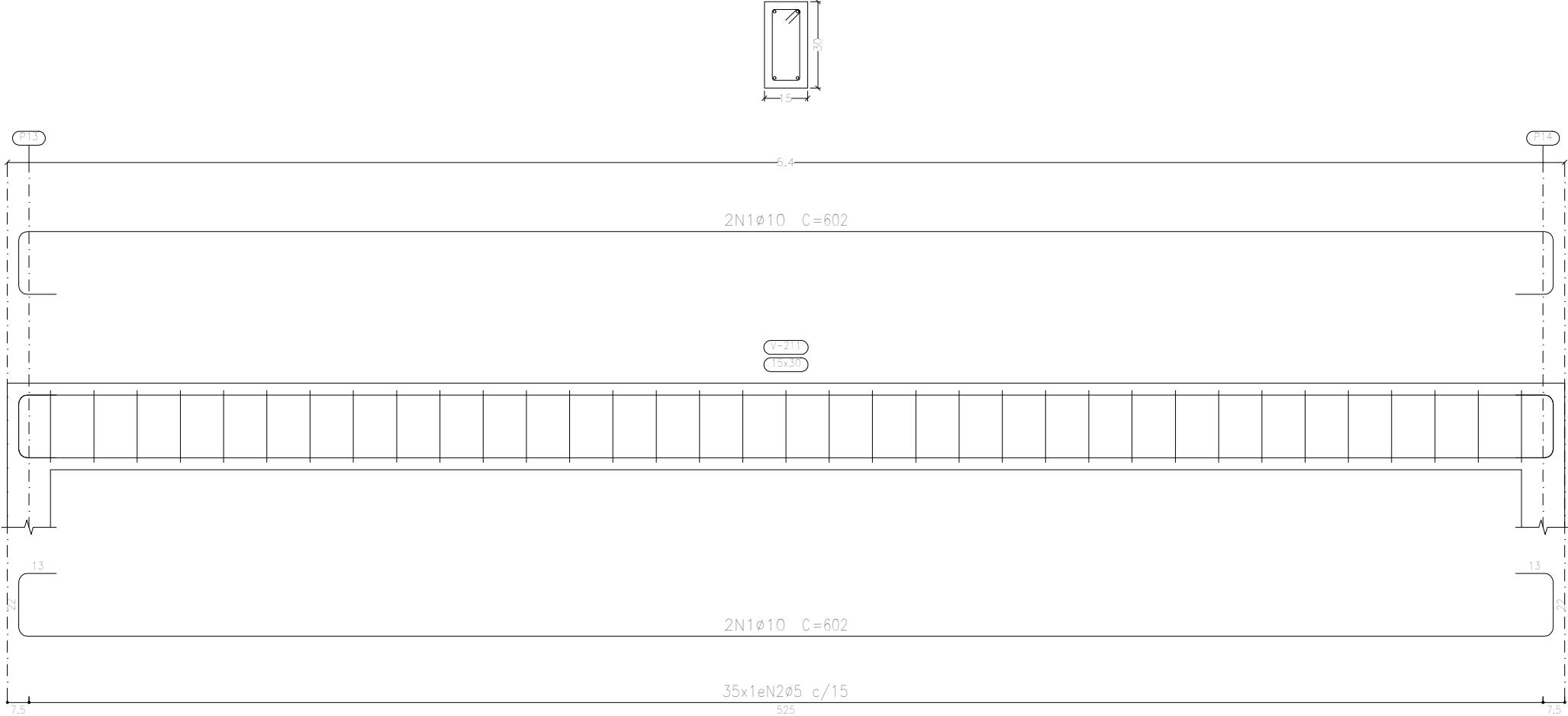
V 1



V 1



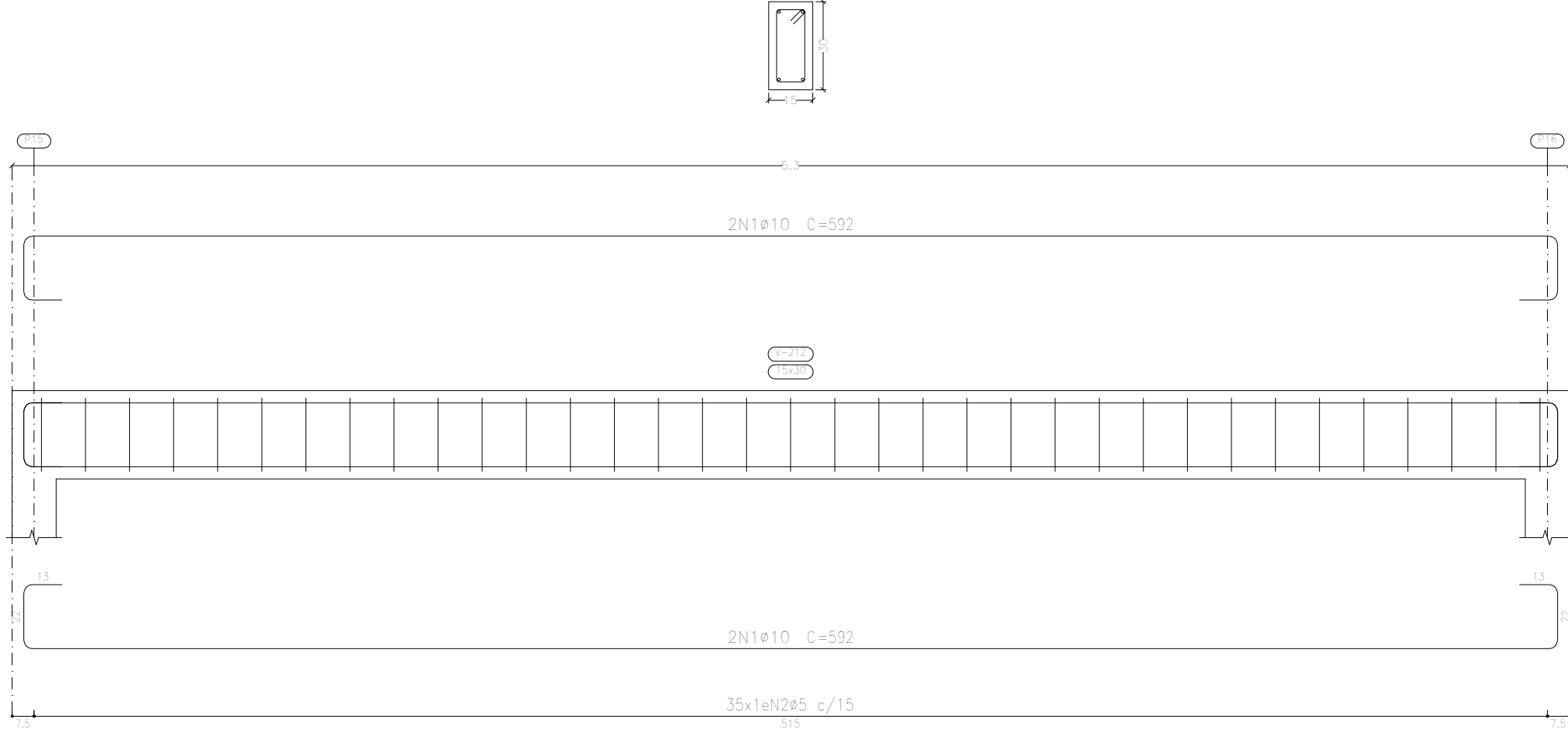
V 3



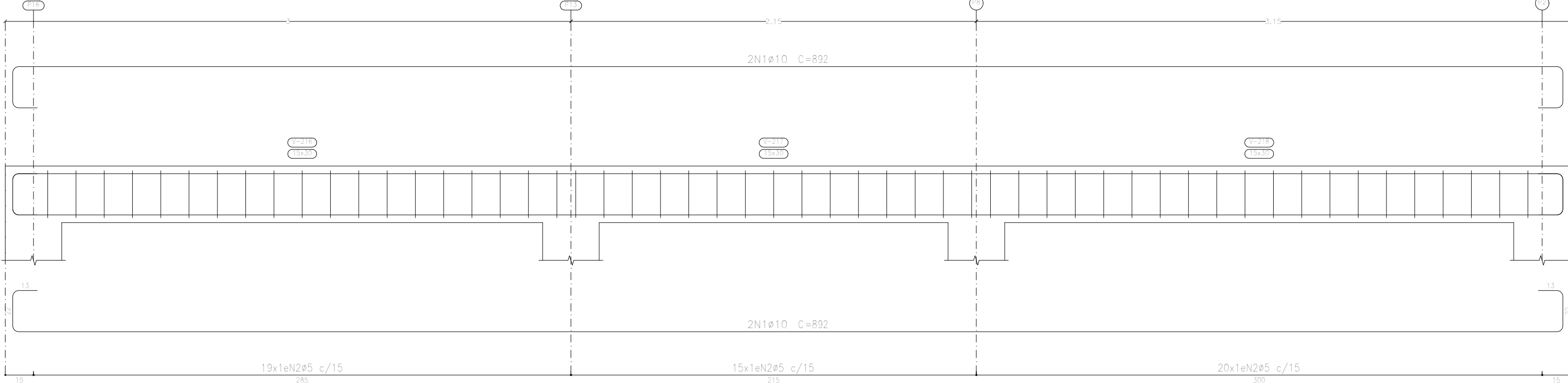
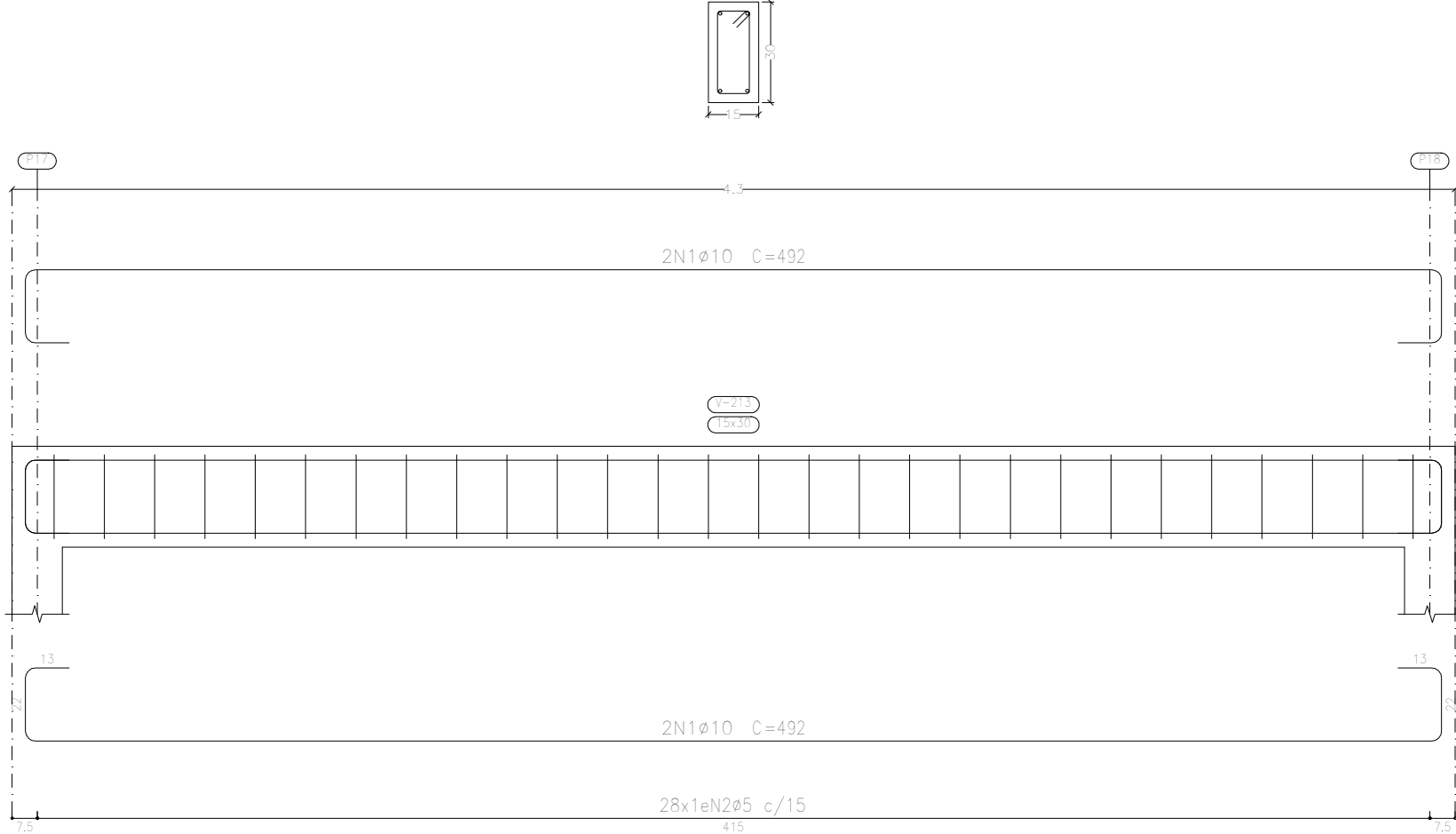
V 3



V 4



V 5



Elemento	Pos.	Diam.	Q.	Esquema (cm)	Comp. (cm)	Total (cm)	CA-50 (kg)	CA-60 (kg)
V 1=V 2	1	ø10	2		1100	2200	13.6	
	2	ø10	2		475	950	5.9	
	3	ø10	2		1095	2190	13.5	
	4	ø10	2		457	914	5.6	
	5	ø5	99		78	7722		12.1
					Total+10% (x2)	42.5	13.3	
						85.0	26.6	
V 3	1	ø10	4		602	2408	14.6	
	2	ø5	35		78	2730		4.3
					Total+10% (x2)	16.3	4.7	
V 4	1	ø10	4		592	2368	14.6	
	2	ø5	35		78	2730		4.3
					Total+10% (x2)	16.1	4.7	
V 5	1	ø10	4		492	1968	12.1	
	2	ø5	28		78	2184		3.4
					Total+10% (x2)	13.3	5.7	
V 6=V 11	1	ø10	4		892	3568	22.0	
	2	ø5	54		78	4212		6.6
					Total+10% (x2)	24.2	7.3	
						48.4	14.6	
V 7	1	ø10	4		892	3568	22.0	
	2	ø5	54		78	4212		6.6
					Total+10% (x2)	24.2	7.3	
						0.0	61.6	
						203.3	0.0	
						203.3	61.6	

Ampliação Transbordo		Data:	07/02/2024
Local: Transbordo Municipal		Número de desenho:	
Promotor:			
Projeto Estrutural		Escala:	Indicada
Eduardo Rampanelli Tosetto Engenheiro Civil Número do CREA: 1220503037		Data:	07/02/2024